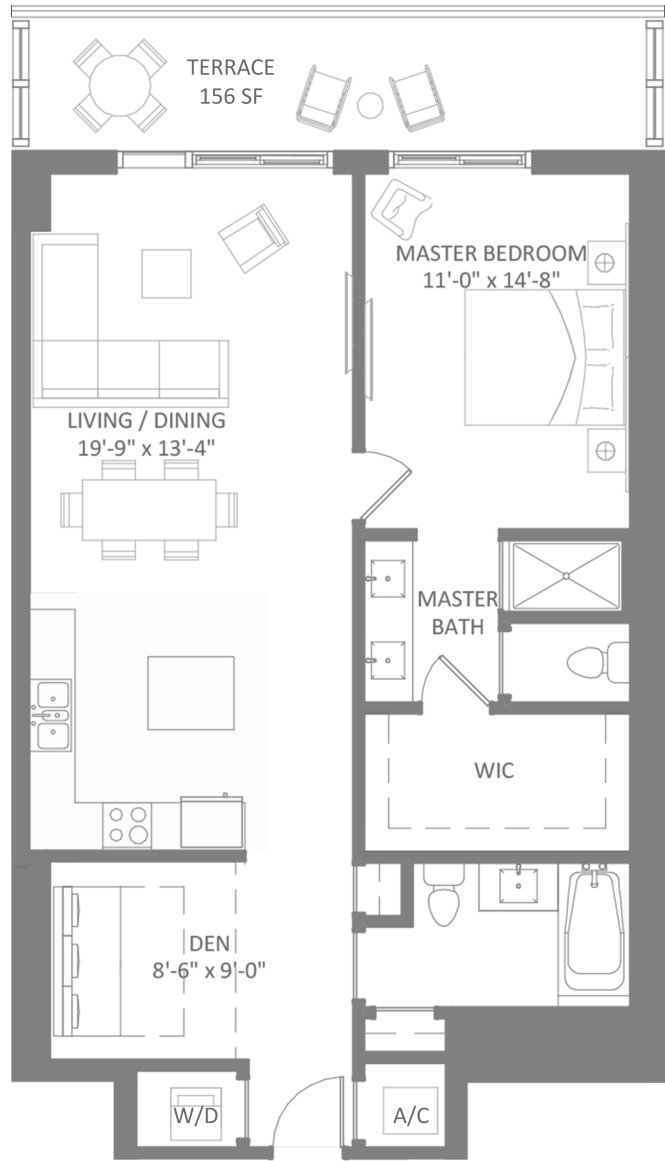


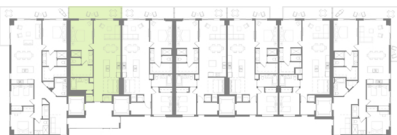
UNIT F

1 Bedroom + Den / 2 Baths
1,188 Total SF / 110.4 m²

THE HARBOUR



NORTH TOWER



SOUTH TOWER



Stated square footage includes the terrace of the unit and is otherwise measured to the exterior boundaries of the exterior walls and the centerline of interior demising walls. This will in fact vary from the square footage that would be determined by using the description and definition of the "Engineering Area" set forth in the Declaration (which generally only includes the interior airspace between the perimeter walls and excludes interior structural components). For the square footage of the "Engineering Area" calculated in the manner set forth in the Declaration, as well as the area of the unit measured as described herein but without the terrace, see Exhibit "3" to the Declaration. All square footages are approximate and may vary with actual construction. All floor plans and development plans are subject to change. Plans are not to scale and may be the reverse (mirror) image of those shown. The survey of the units and the provisions of the Declaration of Condominium shall control in determining the boundaries and actual dimensions of the units. All fixtures, furniture, items of finish, and decorations are for display purposes only and will not be included with the unit. Consult the Purchase Agreement and the prospectus for a description of the features which are to be included in the unit. The approximate size of the unit's terrace is 156 Sq Ft / 14.5 m².